

# VIP User Manual

# PipeBurst Pro™ 4

## Basic Overview

The VIP is the Main System Hub for the PipeBurst Pro 4 System. The primary function of the VIP is to coordinate incoming signals from system devices and facilitate actions accordingly. The VIP utilizes 5 push buttons for physical system interface and 5 corresponding LED lights for system feedback. An Instructional Cross Reference Label is located above the LED lights providing critical operational information and instructions. Each VIP can accommodate a total of 100 Wireless Devices distributed, as applicable, across a maximum of 26 autonomous Zones.

## VIP Configurations and Components

Product	Description
VP400	15 volt VIP
VP410	5 volt VIP
Card 1 (C1)	Located in Slot A of VIP, Includes connection ports for: Wired Water Sensor, Valve, Input 1, Input 2, and Relay
Card 2 (C2)	Located in Slot B of VIP. Includes connection ports for: Wired Water Sensor, Valve, Input 1, Input 2, and Relay
ionleaks.com Card	Located in Slot C of VIP. Communicates System information to ionleaks.com.
Wireless 900 Card	Located in Slot D of VIP. Communicates between VIP and Wireless Devices associated with the System.



## Customer Support

GreenField Direct, LLC

14015 238<sup>th</sup> Street

Greenwood, NE 68366

[www.pipeburstpro.com/contact](http://www.pipeburstpro.com/contact)

E-Mail: [help@greenfelddirect.com](mailto:help@greenfelddirect.com)

Phone: 866-466-LEAK (5325)

Hours of Operation: Weekdays 8:00 AM – 5:00 PM CT

## Warranty Information

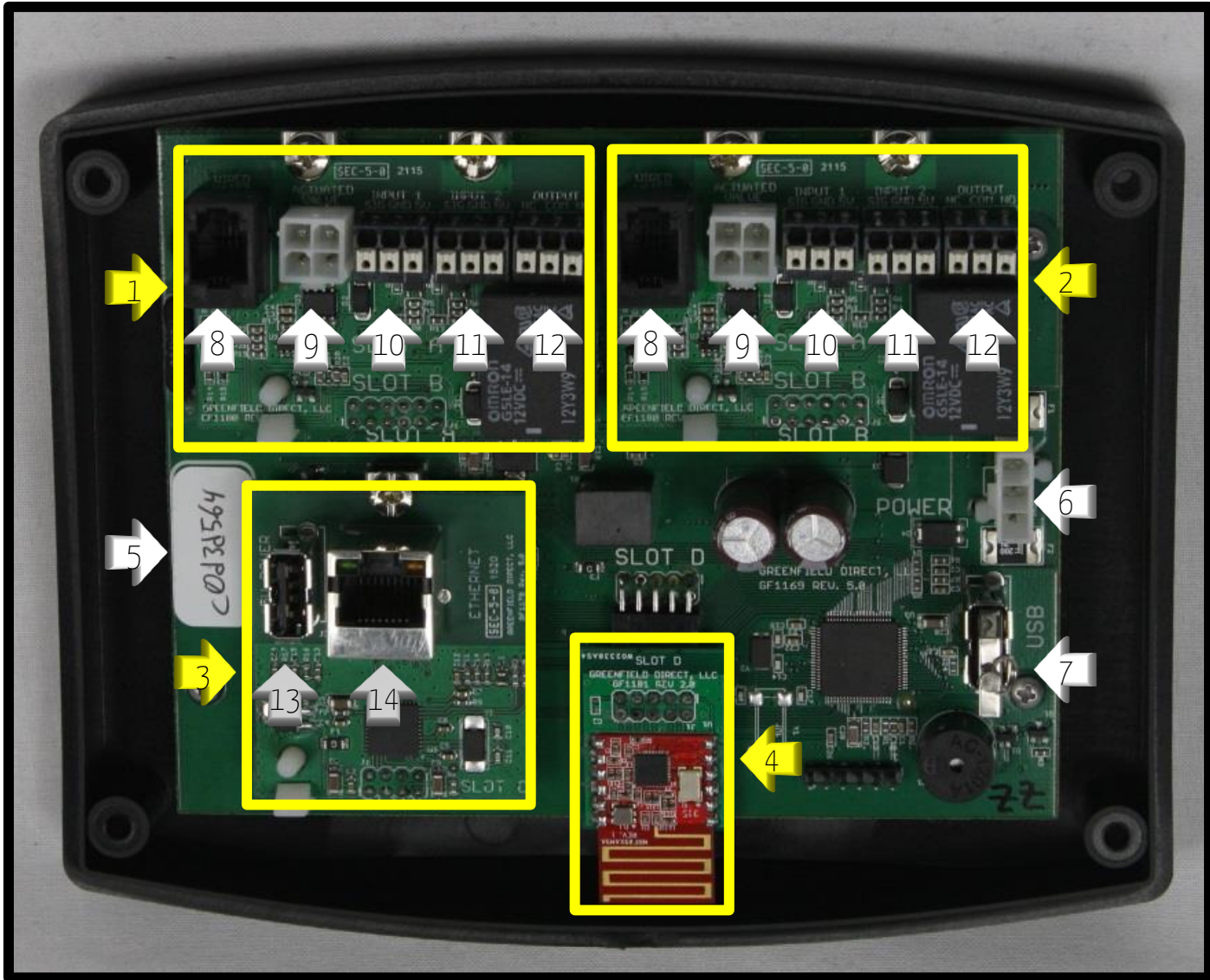
PipeBurst Pro Products 7 Year Limited Warranty

Please visit:

[www.pipeburstpro.com/warranty-registration](http://www.pipeburstpro.com/warranty-registration)

to review full warranty details, register your system, and activate your warranty.

# VIP Cards and Connections



- |    |                            |     |                         |
|----|----------------------------|-----|-------------------------|
| 1. | Card 1 – Slot A            | 8.  | Wired Water Sensor Port |
| 2. | Card 2 – Slot B            | 9.  | Valve Port              |
| 3. | Ethernet Card – Slot C     | 10. | Input 1 Terminal Block  |
| 4. | Wireless 900 Card – Slot D | 11. | Input 2 Terminal Block  |
| 5. | VIP Serial Number          | 12. | Relay Terminal Block    |
| 6. | A/C Power                  | 13. | 5V USB Port             |
| 7. | USB Flash Drive            | 14. | Ethernet Port           |

# Custom VP400 Ordering Information Guide

## 15 Volt VIP Class

Slot Card Position:

Stocked VIP Model #:

V P 4 0 0 - **2** **0** **2** **1**

A B C D

### Card 1 - Slot A

*Options:*

- 0 = None
- 1 = GF9061
- 2 = GF9064
- 3 = GF9066

### Card 2 - Slot B

*Options:*

- 0 = None
- 1 = GF9061
- 2 = GF9064
- 3 = GF9066

### ionleaks.com - Slot C

*Options:*

- 0 = None
- 1 = GF9062
- 2 = GF9065

### Wireless - Slot D

*Options:*

- 0 = None
- 1 = GF9063

### Card 1 - Slot A Information

1 = GF9061, includes:

- Wired Water Sensor Port
- Valve Port
- Input 1 Terminal Block
- Input 2 Terminal Block
- Relay Terminal Block
- Temperature Sensor

2 = GF9064, includes:

- GF9061
- Valve Harness
- Input 1 Extension Wires
- 2 Wire Nuts

3 = GF9066, includes:

- GF9064
- Wired Water Sensor, 20 foot

### Card 2 - Slot B Information

1 = GF9061, includes:

- Wired Water Sensor Port
- Valve Port
- Input 1 Terminal Block
- Input 2 Terminal Block
- Relay Terminal Block
- Temperature Sensor

2 = GF9064, includes:

- GF9061
- Valve Harness
- Input 1 Extension Wires
- 2 Wire Nuts

3 = GF9066, includes:

- GF9064
- Wired Water Sensor, 20 foot

### ionleaks.com - Slot C Information

1 = GF9062, includes:

- Ethernet Port
- 5V Power Output USB Port

2 = GF9065, includes:

- GF9062
- Ethernet Port Extension Cable

### Wireless - Slot D Information

1 = GF9063 includes:

- 915 MHz Wireless Radio

### Standard Features GF9060

All Custom VP400 models include:

- 2GB USB Flash Drive
- USB Port
- USB Port Extension Cable
- 15V Power Supply
- 15V Power Extension Cable

### Optional Features (requires C1 or C2)

- VP401-xxxx
  - Adds Humidity Sensor

### Lead Time

- All Custom VP400 models have a 10 to 15 business day lead time
- They are not stocked

### Minimum Order Quantity

- 10 units

### Accessory Part Numbers

- GF1187 = 2GB USB Flash Drive
- GF1210 = USB Port Extension Cable
- GF1040 = 15V Power Supply
- GF1189 = 15V Power Extension Cable
- GF9016 = Valve Harness
- GF9067 = Input Extension Wires & 2 Wire Nuts
- GF1211 = Ethernet Port Extension Cable
- SK220B = Wired Water Sensor, 20 foot

# Custom VP410 Ordering Information Guide

## 5 Volt VIP Class

Slot Card Position:

Stocked VIP Model #:

V P 4 1 0 - **0** **0** **2** **1**

A B C D

### Card 1 - Slot A

Options:

- 0 = None
- 1 = GF9061
- 2 = GF9064
- 3 = GF9066

### Card 2 - Slot B

Options:

- 0 = None
- 1 = GF9061
- 2 = GF9064
- 3 = GF9066

### ionleaks.com - Slot C

Options:

- 0 = None
- 1 = GF9062
- 2 = GF9065

### Wireless - Slot D

Options:

- 0 = None
- 1 = GF9063

### Card 1 - Slot A Information

1 = GF9061, includes:

- Wired Water Sensor Port
- Valve Port (**Not Usable**)
  - Order VP400 Class VIP to use Valve Port
- Input 1 Terminal Block
- Input 2 Terminal Block
- Relay Terminal Block
- Temperature Sensor

4 = GF9069, includes:

- GF9061
- Input 1 Extension Wires
- 2 Wire Nuts

5 = GF9071, includes:

- GF9069
- Wired Water Sensor, 20 foot

### Card 2 - Slot B Information

1 = GF9061, includes:

- Wired Water Sensor Port
- Valve Port (**Not Usable**)
  - Order VP400 Class VIP to use Valve Port
- Input 1 Terminal Block
- Input 2 Terminal Block
- Relay Terminal Block
- Temperature Sensor

4 = GF9069, includes:

- GF9061
- Input 1 Extension Wires
- 2 Wire Nuts

5 = GF9071, includes:

- GF9069
- Wired Water Sensor, 20 foot

### ionleaks.com - Slot C Information

1 = GF9062, includes:

- Ethernet Port
- 5V Power Output USB Port

2 = GF9065, includes:

- GF9062
- Ethernet Port Extension Cable

### Wireless - Slot D Information

1 = GF9063 includes:

- 915 MHz Wireless Radio

### Standard Features GF9070

All Custom VP410 models include:

- 2GB USB Flash Drive
- USB Port
- USB Port Extension Cable
- 5V Power Supply

### Optional Features (requires C1 or C2)

- VP411-xxxx
  - Adds Humidity Sensor

### Lead Time

- All Custom VP410 models have a 10 to 15 business day lead time
- They are not stocked

### Minimum Order Quantity

- 10 units

### Accessory Part Numbers

- GF1187 = 2GB USB Flash Drive
- GF1210 = USB Port Extension Cable
- GF1041 = 5V Power Supply
- GF9067 = Input Extension Wires & 2 Wire Nuts
- GF1211 = Ethernet Port Extension Cable
- SK220B = Wired Water Sensor, 20 foot

# VIP Operation



Automatic Environmental Monitoring  
& Management System



Valve Interface Panel

SUPPORT

www.PipeBurstPro.com  
866-IONLEAKS (866-466-5325)

*Disconnect Power Before Servicing*

LED STATUS	WIRELESS SLOT D	FLASH DRIVE USB	CARD 1 SLOT A	CARD 2 SLOT B	ionleaks.com™ SLOT C	LED STATUS
OFF	SLOT CARD A/B/C/D -OR- USB FLASH DRIVE IS EITHER NOT INSTALLED OR DETECTED					OFF
GREEN	DEVICES SYNCED	ON	ON	ON	ONLINE	GREEN
RED	DEVICES NOT SYNCED	OFF	OFF	OFF	OFFLINE	RED
FLASH GREEN	LEARN MODE	READ/WRITE				FLASH GREEN
FLASH RED	ALARM		ALARM	ALARM		FLASH RED
FLASH RED GREEN	FAULT	FAULT	FAULT	FAULT	FAULT	FLASH RED GREEN
PRIMARY FUNCTION	HOLD 2 SEC FOR LEARN MODE	HOLD 2 SEC TO TURN ON/OFF	TAP TO TURN ON/OFF	TAP TO TURN ON/OFF	HOLD 7 SEC FOR SYSTEM REBOOT	PRIMARY FUNCTION
SECONDARY FUNCTION	SEE USER MANUAL	SEE USER MANUAL	<b>DURING ALARM:</b> TAP TO SILENCE ALARM, TAP AGAIN TO RESET	SEE USER MANUAL	SEE USER MANUAL	SECONDARY FUNCTION

Model: VIP  
Contains FCC ID: OA3MRF89XAM9A  
Contains IC: 7693A-89XAM9A

1

2

3

4

5

GF1199 rev1015

## Button 1 Primary Function

1. Hold for 2 seconds to enter Learn Mode.
2. Once all Wireless Devices have been learned by the VIP, tap to exit Learn Mode.

## Button 1 Secondary Function

1. Hold for 7 Seconds to unlearn all wireless devices from VIP memory.

## Button 2 Primary Function

1. No primary function is assigned. Holding button 2 for 2 seconds does not do anything.

## Button 2 Secondary Function

1. Hold for 7 seconds to apply settings from the USB Flash Drive.

## Button 3 Primary Function

1. Tap to turn Zone ON/OFF for Card 1.

## Button 3 Secondary Function

1. During an audible alarm, tap once to silence the alarm. Tap a second time to reset the alarm condition.

## Button 4 Primary Function

1. Tap to turn Zone ON/OFF for Card 2.

## Button 4 Secondary Function

1. During an audible alarm, tap once to silence the alarm. Tap a second time to reset the alarm condition.

## Button 5 Primary Function

1. Hold for 7 seconds to perform a System Reboot.

## Button 5 Secondary Function

1. There is no secondary function assigned.

## Card 1 and Card 2 Standard Settings Summary

Setting	Configuration		
<i>Temperature Threshold</i>	Less Than or Equal To 41°F (5°C)		
<i>Temperature Threshold Action</i>	Zone Alarm		
<i>Zone State Control Buttons (Buttons 3 &amp; 4)</i>	Enabled		
<i>Data Recording Interval</i>	6 hours		
<i>Audible Alarm</i>	Enabled		
<i>Valve Operation</i>	TickerValve, Changes With Zone State		
<i>Valve State When Zone State is On</i>	On		
<i>Relay Operation</i>	Relay Changes with Zone State		
<i>Relay State When Zone State is On</i>	On		
<i>Water Sensor Wet Action</i>	Zone Alarm		
<i>Input 1</i>	FloMeter	<i>Home Mode – Min Threshold</i>	40 Pulses in 30 Minutes
		<i>Home Mode – Min Action</i>	Log Only
		<i>Home Mode – Max Threshold</i>	67 Pulses in 30 Minutes
		<i>Home Mode – Max Action</i>	Log Only
		<i>Away Mode – Min Threshold</i>	5 Pulses in 30 Minutes
		<i>Away Mode – Min Action</i>	Log Only
		<i>Away Mode – Max Threshold</i>	10 Pulses in 30 Minutes
		<i>Away Mode – Max Action</i>	Log Only
		<i>Continuous Flow Threshold</i>	≥ 1 Pulse/Hour for 12 Hours
<i>Continuous Flow Action</i>	Log Only		
<i>Input 2 Type</i>	Pull Up		

## System Standard Settings Summary

Setting	Configuration
<i>VIP Button 1</i>	Enabled
<i>Wireless Device Offline – Timer Duration</i>	7 Days
<i>Wireless Device Offline – Action</i>	Log Only
<i>Zone Check – Timer Duration</i>	30 Days
<i>DHCP or Static</i>	DHCP





*Customer Support*

GreenField Direct, LLC

14015 238<sup>th</sup> Street

Greenwood, NE 68366

[www.pipeburstpro.com/contact](http://www.pipeburstpro.com/contact)

E-Mail: [help@greenfelddirect.com](mailto:help@greenfelddirect.com)

Phone: 866-466-LEAK (5325)

Hours of Operation: Weekdays 8:00 AM – 5:00 PM CT